

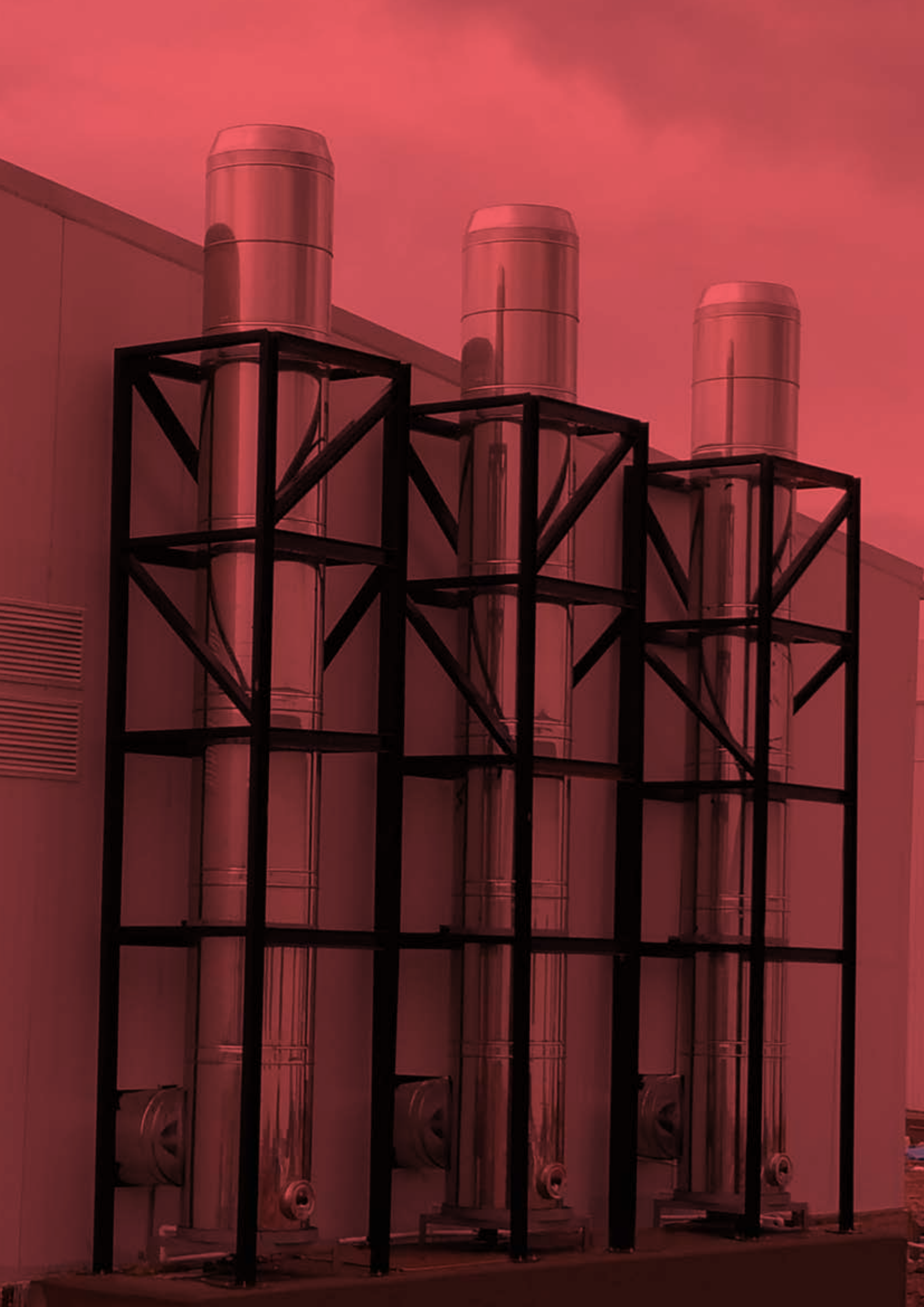
30TH
ANNIVERSARY
WITH PROUDLY

" A good boiler provides
maximum efficiency only with
a well designed **chimney** "



www.rottek.com.tr

rottek
"chimney expert"





Rotek Energy & Chimney Systems founded in 1993.

Rotek is engaged with production of stainless steel prefabricated and free standing chimney systems, refuse chutes, linen chutes, pneumatic conveying piping products, kitchen hood and industrial hood exhaust ducts, ventilation ducts, air supply and vent towers, flue gas purification filters, chimney damper, silencer, fan and special designed chimney terminals as well as rotary cap for residence building , business and shopping center, hotels, hospitals, factories and industrial plants.

Rotek, provides comprehensive solutions to its customers, is the leader company of the sector in Turkey with its experienced, computer systems supported staff, European standard products and after sales service.

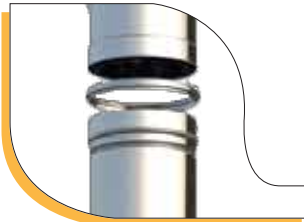


ROTEK CHIMNEY SYSTEMS



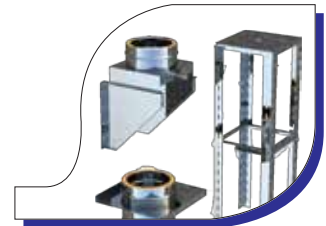
Rotek chimney systems are designed for use in all gas, liquid or solid fueled heating systems (negative and positive condensation or without condensation), diesel generators or co-generation systems and hood exhaust systems.

The standard products are made of high-grade, corrosion resistant AISI 316L and 316Ti stainless steel with thicknesses of between 0.40 mm and 3.00 mm in accordance with the diameters of the chimneys.



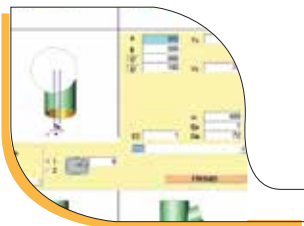
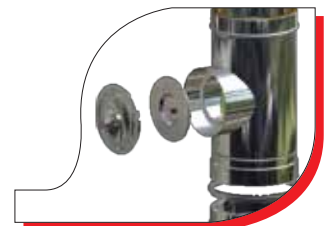
The modules have 50 mm male - female connection. For a smooth connection and good transition, the diameter of one end of the module is enlarged in automatic machine. A perfect leak proofing is achieved, thanks to precise joining, use of high temperature sealant at the joints and tightening with external clamp. The chimneys are specially designed to compensate the thermal expansions themselves.

Also, the telescopic supports that are anchored to the concrete shaft in the vertical axes between 3 m and 50 m spacing according to the diameters, compensate the thermal expansions and bear the static loads of the chimney at the same time.



Specially designed chimney terminals and caps, which prevent back draft and increase draft, are used according to the place, altitude and weather conditions of the site, where the chimney will be installed.

The chimney cleaning hole covers, measuring and draining ports are made of stainless steel, with a leakproof design. These are used at suitable place of the chimney and enable the cleaning of the chimney and draining the condensation water.



ROTEK chimneys are designed with the help of computer aided design tools with great care, to provide you with the optimal solutions.

ROTEK chimneys are manufactured at automatic workbenches with TIG or PLASMA welding, using protective gases for welding, with homogeneous and smooth results. This way, the acids in the waste gases can not do any harm to the welding joints.



WHY ROTEK ?

We, as Rotek, offer you advice and solutions for high-performance stainless chimney applications and solutions to chimney problems, and present you with technological developments and devices in these matters.



CE CERTIFICATE
(EN 1856-1:2009, TZUS, a.a. 1020),
(EN 1856-2 2009, TZUS, a.a 1020),



CE CERTIFICATE
(EN 13084-7:2005
/ AC 2009 TZUS, a.a 1020, 4



GOST-R Certificate



Free standing chimney calculation and design according to CICIND,



Sales through dealers in 30 provinces across Turkey, exports to 20 countries.



30 years of experience and expert engineers with appropriate solutions

Appropriate for use in negative and positive draft systems, Leak proof and safe use under 5000 Pa pressure, H1 class and T600 chimney gas temperature, 20 years of experience and convenient solutions with expert engineering, Chimney projects in accordance with EN 13384-1, Self-standing chimney calculations in accordance with CICIND, Centralized solutions for all chimney problems and equipment, Flexibility of custom design for required places and wide range of products, Sales through distributors in 30 cities of Turkey, exports to 20 countries.





**MODULAR
CHIMNEY SYSTEMS**

RTK SERIES

RTK single wall chimney systems are usually used for in-shaft applications of the modernized old or renovation chimneys, kitchen hood waste gas, ventilation and process devices. These systems are single-walled and have a high thermal conductivity. They are manufactured with continuous TIG or PLASMA welding. The chimney connections are male-female joints and tightened with a stainless steel clamp from outside. The joints are leak-proofed with high temperature sealant.

CE Class

Wet (W) Systems

T400-N1 -W-V₂-L50(040-300)-0250 (DN80-300)
 T400-N1 -W-V₂-L50(050-300)-0375 (DN301 -450)
 T400-N1 -W-V₂-L50(050-300)-0500 (DN451 -500)
 T400-N1 -W-V₂-L50(060-300)-0500 (DN501 -600)
 T400-N1 -W-V₂-L50(080-300)-01000 (DN601 -800)
 T400-N1 -W-V₂-L50(090-300)-01000 (DN801 -1000)
 T400-N1 -W-V₂-L50(100-300)-01000 (DN1001 -1200)

Dry (D) Systems

T400-N1 -D-V₂-L50(040-300)-G250 (DN80-300)
 T400-N1 -D-V₂-L50(050-300)-G375 (DN301 -450)
 T400-N1 -D-V₂-L50(050-300)-G500 (DN451 -500)
 T400-N1 -D-V₂-L50(060-300)-G500 (DN501 -600)
 T400-N1 -D-V₂-L50(080-300)-G1000 (DN601 -800)

Diameters

Max. Temperature

Corrosion Class

Pressure Class

Material

Between Ø 80 to Ø 1200 mm

T400

V₂

N1 (Negative pressure 40Pa) (Only RTKN H1 Class)

Wall thickness; between 0,40 to 3,00 mm (AISI316L, 1.4404) stainless steel

Advantages

Leak proof, quick and easy installation, perfectly impermeable to condensate, low heat transmission and low outer wall temperature, rapid activation of draught, low surface roughness and draught efficiency, special chimney terminal and cap design, wide range of products.

Applications



RTK Mono D SERIES

RTK Mono D, double wall chimney systems are usually used for fireplaces, heating, steam and hot oil boilers and for process or hood systems, through which high temperature gases flow. The system is double walled and monoblock; rock wool insulation is inserted between the walls. It has low thermal conductivity, since the heat of the chimney gas is not considerably transferred to the environment, the chimney efficiency is high. It is manufactured with continuous TIG or PLASMA welding. The chimney connections are male-female joints and tightened with a stainless steel clamp from outside. The system is designed to compensate the expansion of the inner wall due to high chimney gas temperatures.

CE Class

Wet (W) Systems

T600-N1 -W-V₂-L50(040-300)-060 (DN80-300)
 T600-N1 -W-V₂-L50(050-300)-090 (DN301 -450)
 T600-N1 -W-V₂-L50(050-300)-0120 (DN451-500)
 T600-N1 -W-V₂-L50(060-300)-0120 (DN501-600)
 T600-N1 -W-V₂-L50(080-300)-0240 (DN601-800)
 T600-N1 -W-V₂-L50(090-300)-0240 (DN801-1000)
 T600-N1 -W-V₂-L50(100-300)-0240 (DN1001 -1200)

Between Ø 80 to Ø 1200 mm

T600

V₂

N1 (Negative pressure 40Pa)

Wall thickness; between 0,40 to 3,00 mm (AISI316L, 1.4404) stainless steel, Out wall between 0,50 to 0,80 mm (AISI316L, 1.4301)

Diameters

Max. Temperature

Corrosion Class

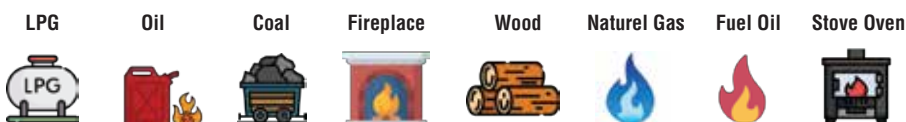
Pressure Class

Material

Advantages

Leak proof, quick and easy installation, perfectly impermeable to condensate, low heat transmission and low outer wall temperature, rapid activation of draught, low surface roughness and draught efficiency, special chimney terminal and cap design, wide range of products.

Applications



RTKD SERIES

RTKD th double wall chimney systems are usually used for heating, double wall chimney systems are usually used for heating, steam and hot oil boilers and for process or hood systems, through which high temperature gases flow. The system is double walled; rockwool insulation is inserted between the walls. It has low thermal conductivity, since the heat of the chimney gas is not considerably transferred to the environment, the chimney efficiency is high. It is manufactured with continuous TIG or PLASMA welding. The chimney connections are male-female joints and tightened with a stainless steel clamp from outside. The system is designed to compensate the expansion of the inner wall due to high chimney gas temperatures.

CE Class

Wet (W) Systems

T300-N1-W-V2-L50(040-300)-O60 (DN80-300)
 T300-N1-W-V2-L50(040-300)-O90 (DN301-450)
 T300-N1-W-V2-L50(050-300)-O120 (DN451-500)
 T300-N1-W-V2-L50(060-300)-O120 (DN501-600)
 T300-N1-W-V2-L50(080-300)-O240 (DN601-800)
 T300-N1-W-V2-L50(090-300)-O240 (DN801-1000)
 T300-N1-W-V2-L50(100-300)-O240 (DN1001-1200)

Dry (D) Systems

T300-N1-D-V2-L50(040-300)-G100 (DN80-300)
 T300-N1-D-V2-L50(040-300)-G150 (DN301-450)
 T300-N1-D-V2-L50(050-300)-G200 (DN451-500)
 T300-N1-D-V2-L50(060-300)-G200 (DN501-600)
 T300-N1-D-V2-L50(080-300)-G400 (DN601-800)
 T300-N1-D-V2-L50(090-300)-G400 (DN801-1000)
 T300-N1-D-V2-L50(100-300)-G400 (DN1001-1200)

Diameters

Max.Temperature

Corrosion Class

Pressure Class

Material

T300

V₂

N1 (Negative pressure 40Pa)

Wall thickness; between 0,40 to 3,00 mm (AISI316L, 1.4404) stainless steel. Out wall between 0,50 to 0,80 mm (AISI316L, 1.4301)

Advantages

Leak proof, quick and easy installation, perfectly impermeable to condensate, low heat transmission and low outer wall temperature, rapid activation of draught, low surface roughness and draught efficiency, special chimney terminal and cap design, wide range of products

Applications



RTKY-HAB SERIES

RTKY-HAB single wall and double wall chimney system is used for the positive pressure single or cascade connection chimney applications of low temperature flue gas systems and systems with condensation where modern heating appliances are used, and for the positive pressure single or multi connection chimney applications of hermetic devices. It has the same characteristics as the RTK series in terms of manufacturing method and joint system, the only difference is the usage of readymade special sealant and its channel forming for leak-proofing.

CE Class

Wet (W) Systems

T160-P1-W-Vm-L50(040-200)-O120 (DN80-300)
 T160-P1-W-Vm-L50(050-200)-O180 (DN301-450)
 T160-P1-W-Vm-L50(050-200)-O240 (DN450-500)
 T160-P1-W-Vm-L50(060-200)-O240 (DN501-600)
 T160-P1-W-Vm-L50(080-200)-O480 (DN601-700)

Diameters

Max.Temperature

Corrosion Class

Pressure Class

Material

Between Ø 80 to Ø 700 mm

T160

V_m

P1 (Positive pressure 200Pa)

Wall thickness; between 0,40 to 2,00 mm (AISI 316L, 1.4404) stainless steel, RTKYD-HAB for Out wall between 0,30 to 0,60 mm (AISI 304/1.4301) stainless steel.

Advantages

Leak proof, quick and easy installation, perfectly impermeable to condensate, low heat transmission and low outer wall temperature, rapid activation of draught, low surface roughness and draught efficiency, special chimney terminal and cap design, wide range of products.

Applications



MODULAR CHIMNEY SYSTEMS COMPONENTS



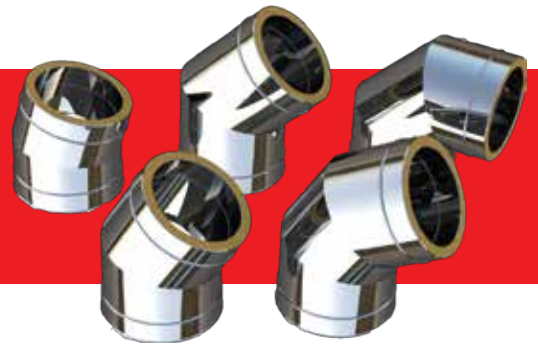
Straight Length

- 20 cm
- 25 cm
- 50 cm
- 100 cm



Elbow

- Elbow 15°
- Elbow 30°
- Elbow 45°
- Elbow 65°
- Elbow 90°

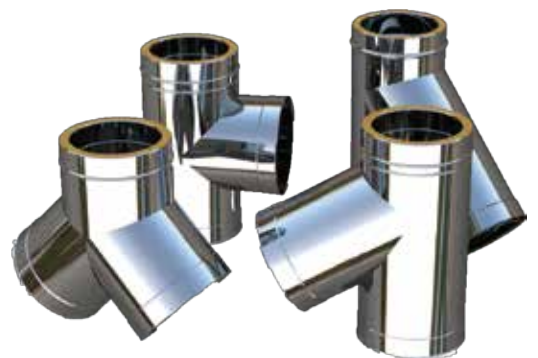


Rain Cap Open-End Terminal Wind Cap

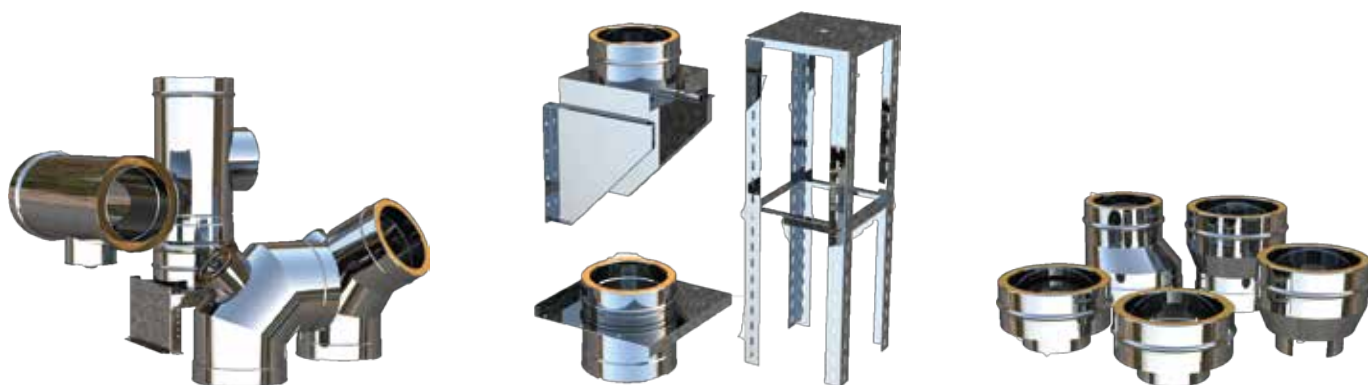


Tee Module

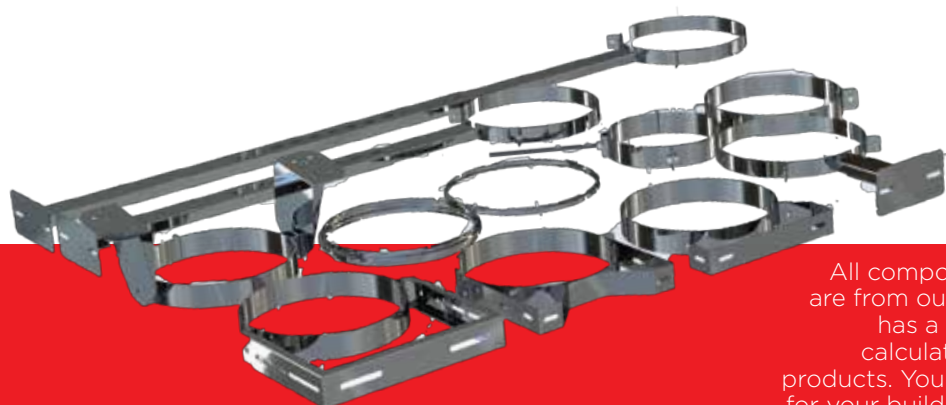
- Chimney Pipe Connection 45°
- Tee Module 45°
- Chimney Pipe Connection 60°
- Tee Module 60°
- T-Piece 90°
- Tee Module 90°
- Double Connection For Flue Pipes 45°
- Breeches Tee Module 45°



MODULAR CHIMNEY SYSTEMS COMPONENTS



Condensation, low heat transfer and low external wall temperature, fast transition to operating condition, efficient drive with low surface roughness, simple drive and architectural design with special chimney cap options, wide product range.



All components of the Rotek chimney clamp are from our own production and the chimney has a perfect hold. Necessary static load calculations are carried out for all support products. You will find products that are suitable for your building structure and securely connect both your vertical and horizontal flue duct.

- FLAT FLASHING
- TAPERED FLASHING 5-15°
- TAPERED FLASHING 16-25°
- TAPERED FLASHING 26-35°
- TAPERED FLASHING 36-45°
- RAIN COLLAR
- cover plates 0-30° without rear ventilation
- cover plates 30-45° without rear ventilation



REFERENCES

Ford Otosan Gölcük Fabrikası - Kocaeli	Chimney
Ford Otosan Eskişehir Fabrikası - Eskişehir	Chimney
Hyundai İzmit - Kocaeli	Chimney
Unilever Algida Fabrikası - Konya	Free Standing Chimney
Hospital Nobo Otrobanda - Curaçao, Carribean	HVAC
Cargill Gıda - Balıkesir	Free Standing Chimney
TC Moldova Büyükelçilik Binası - Moldova	Free Standing Chimney
Tekko Toyotetsu Otomotiv Gebze İzmit	Chimney
Toyota sa İzmit	Chimney
Unilever Algida Fabrikası - Çorlu	Free Standing Chimney
Roche a.ş. İlaç İstanbul	Chimney
Glaxowellcome a.ş. Gebze İzmit	Chimney Automation System
Sandoz Syntek İlaç fabrikası Tuzla İstanbul	Chimney
Thyssen Krupp Eurinox Servis Merkezi Gebze İzmit	Chimney
Procter & Gamble Fabrikası - Romanya	Chimney
Procter & Gamble Fabrikası İstanbul	Chimney
Jotun Boya Fabrikası Çerkezköy Tekirdağ	Proses Chimney
Basf Kimya Gebze İzmit	Chimney
Basf Elastogran Gebze İzmit	Chimney
Sika Yapı Kimyasalları Fabrikası Tuzla İstanbul	Chimney
Bosch Siemens a.ş. Fabrikası Çerkezköy Tekirdag	Free Standing Chimney
Bosch a.ş. Tesisleri Bursa	Chimney
Bosch Rexroth Tesisleri Bursa	Chimney
Beko Elektronik a.ş. Beylikdüzü İstanbul	Chimney
Johnson Control Fabrikası - Romanya	Chimney
Sew Eurodrive Grup Gebze	Chimney
Westminster Park Plaza Bridge Hotel Londra - İngiltere	Chimney
Kommetzbank Merkez Binası Almaty - Kazakistan	Refuse Chute
Frans Maas Lojistik - Romanya	Chimney
Renault Mais Bursa	Chimney
Fritolay Cips Fabrikası Tarsus	Chimney
Schattdecor Fabrikası Gebze İzmit	Chimney
İstanbul havalimanı İstanbul	Chimney
Türkiye Finans Merkezi İstanbul	Chimney
Westminster Park Plaza Bridge Hotel London - England	Chimney
Zwitina P.P. Plant - Libya	Free Standing Chimney
Agip Kco Kashagan Petrochemical Comp. Aytrau - Kazakhstan	Chimney, Hvac
Aioc Central Azeri CWP Platform - Azerbaijan / Chimney	Chimney
Chevroil Refinery Plant IB MOA Tengiz - Kazakhstan	Free Standing Chimney
Sewerage and Drainage Basrah AAT Plant - Iraq	Chimney
Monaco Towers - Romania	Chimney
Al Tadamon Twin Towers - Libya	Hvac

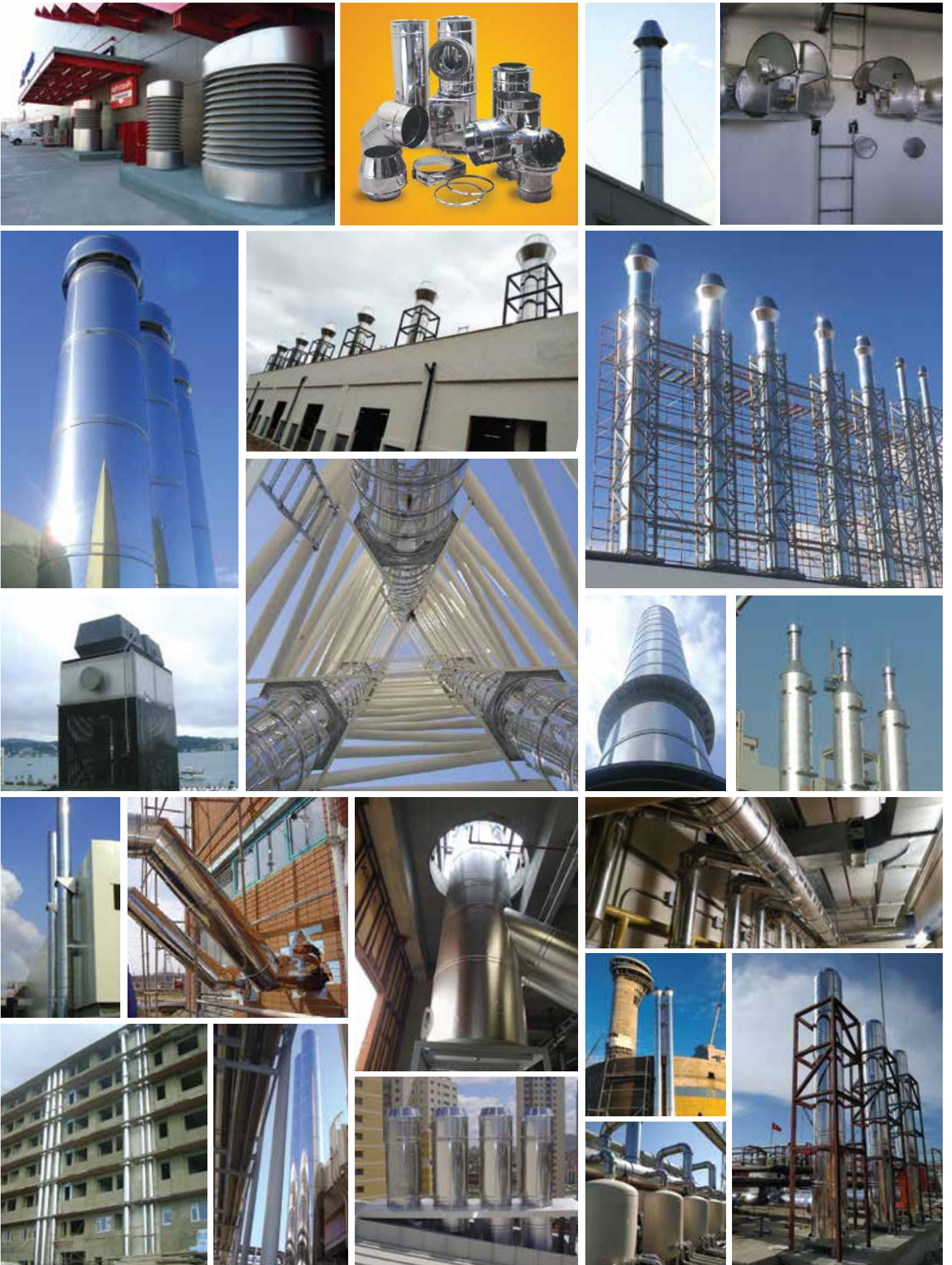
REFERENCES

Presidential Palace - Azerbaijan	Chimney, Fan Automation
Haydar Aliyev Cultural Center - Azerbaijan	Chimney
Tripoli Convention Center - Libya	Chimney
Kommetzbank Center Almaty - Kazakhstan	Refuse Chute With Separator
Astana University - Kazakhstan	Chimney
Bosch Siemens A.Ş. Factory Çerkezköy Tekirdağ	Free Standing Chimney
Procter & Gamble Factory - Romania	Chimney
Mardan Palace Hotel Antalya	Chimney, Linen Chute
Atikpaşa Four Seasons Hotel İstanbul	Chimney, Linen Chute, Fan Automation
Hilton Hotel Sophia - Bulgaria	Chimney
Atatürk Airport Yeşilköy İstanbul	Refuse Chute, Diesel Generator Chimney
Ashgabat Airport - Turkmenistan	Chimney
Turkmenbashi Airport - Turkmenistan	Chimney
Cairo Airport - Egypt	Free Standing Chimney
Tbilisi Airport - Georgia	Chimney
Batumi Airport - Georgia	Chimney
Erbil Airport - Iraq	Chimney
Sulaimaniya Airport - Iraq	Chimney
Esenboğa Airport Ankara	Chimney
S.G. Airport Old and New Terminal Kurtköy İstanbul	Free Standing Chimney
Adnan Menderes Airport İzmir	Chimney
Antalya Airport Antalya	Chimney
VRP Vatsal Train Station - Turkmenistan	Chimney
Rusal Office Buildings - Kazakhstan	Free Standing Chimney
32 Hectare Residence Project - Kazakhstan	Free Standing Chimney
Esentai Park Almaty - Kazakhstan	Refuse Chute With Separator
Oran Sonatrach - Alger	Chimney, Refuse Chute
Harbiye Convention Center İstanbul	Chimney
Siberbank Center - Turkmenistan	Chimney
Liberty Mall Avm - Romania	Chimney
Ruse Mall Avm - Romania	Chimney
Cpm Constanta Avm - Romania	Chimney
Carrefour Avm - Romania	Chimney
Bucesti Mall Avm - Romania	Chimney
Mall Dova Avm - Romania	Chimney
City Mall Avm - Romania	Chimney
Maksima Avm Almaty - Kazakhstan	Chimney
Innova Bulvar Avm - Azerbaijan	Chimney, Fan Automation
Kanyon Eczbş. Avm Levent İstanbul	Diesel Generator and Hood Chimney, Refuse Chute
212 Avm Yenibosna İstanbul	Chimney, Ventilation Towers
Port Residence Baku - Azerbaijan	Chimney
Landmark 3 Baku - Azerbaijan	Chimney

REFERENCES

Gara Herastrau Office Building - Romania	Chimney
Head Offices Victoriei Ester Auto Center - Romania	Chimney
Energy Ministry Building Ashgabat - Turkmenistan	Chimney
Health Ministry Building Ashgabat - Turkmenistan	Chimney
Ashgabat Theater Complex - Turkmenistan	Chimney
Middle East Technical University - Cyprus	Chimney
Near East University - Cyprus	Chimney
Durres Hospital - Albania	Chimney
Child Birth Hospital - Turkmenistan	Chimney
Oncology Hospital - Turkmenistan	Chimney
Four Seasons Hotel St. Petersburg - Rusia	Linen Chute
Noah's Arc Resort Hotel - Cyprus	Chimney
Jasmin Court Hotel - Cyprus	Chimney
Tashkent Friendship Hotel - Uzbekistan	Chimney
Bucharest Hotel - Romania	Chimney
Dushambe Hotel - Tajikistan	Free Standing Chimney
Hyatt Hotel - Azerbaijan	Linen Chute
Marriot Hotel Tbilisi - Georgia	Chimney
Park Hyatt Hotel Baku - Azerbaijan	Linen Chute
Intourist Hotel Batumi - Georgia	Chimney
Grand Vicory Hotel - Kazakhstan	Chimney, Linen Chute
Divan Hotel Tuzla İstanbul	Chimney
Pera Palas Hotel Taksim İstanbul	Chimney, Linen Chute
Aries 2 Factory Tashkent - Uzbekistan	Chimney
Johnson Control Factory - Romania	Chimney
Jonson Matthey Skopje - Macedonia	Free Standing Chimney
YKK Zippers Factory - Romania	Chimney
Namet Entegre Factory Çayırova İstanbul	Chimney, Refuse and Bone Chute
Milk Factory Baku - Azerbaijan	Chimney
Flipper Commeimpex Sri. Cips Factory - Romania	Chimney
Gourmat Olive Oil factory - Romania	Chimney
Euronut Gıda San. A.Ş. Nuts Factory - Romania	Chimney
Frans Maas Logistics - Romania	Chimney
Nissa Hotel - Turkmenistan	Chimney
Golden Plaza Hotel - Turkmenistan	Chimney
Delta Hotel - Turkmenistan	Chimney
Watanchy Hotel - Turkmenistan	Chimney
Kuwwat Hotel - Turkmenistan	Chimney
Kerwen Hotel - Turkmenistan	Chimney
Serene Hotel Dushambe - Tajikistan	Chimney

REFERENCES



**Single and double wall
stainless steel
chimney systems**

Applications inside the building
Applications outside the building
Self Standing chimney systems
Use in fuel-oil / gas / solid fuel

Negative pressure systems
(max. 400 °C)

Positive pressure cascade systems
(max. 160 °C)

Generator and cogeneration chimneys
(max. 600 °C)

Both for wet and dry applications
Leak proofing with or without sealing

Equipments to solve chimney problems
Filter systems tor gas cleaning
Refuse chutes
Linen chutes

rotek
"chimney expert"

ROTEK ENERGY & CHIMNEY SYSTEMS

Head Office

Necip Fazıl Mah. Kaynaşlı Sok. No:25/1 Sultanbeyli -İstanbul / TÜRKİYE
T : +90 216 497 21 21 (Pbx) F : +90 216 497 22 06

Factory

Çerkeşli OSB Mah. İmes 9. Cad. No:27, 41455 Dilovası/Kocaeli
T : + 90 262 502 46 66 F : + 90 216 497 22 06

www.rotek.com.tr
rotek@rotek.com.tr

